



LONDON
mart
MALL AMENITIES RETAIL TRADE
— GREATER NOIDA WEST —

London is coming to Greater Noida (West)!



London Mart will be an iconic address where business and fun will blend perfectly. It will bring together the pleasures of shopping, dining, and a dream enterprise. London Mart is located very strategically at Plot No. C-3, Sector - 16B, Greater Noida West, on a 130 Meter Expressway (Noida-Greater Noida Link Road). It's location is marked by easy entry and exit from various important centers like Delhi, Ghaziabad, Noida,

Faridabad and Gurugram; it is just a few minutes drive from the National Highways like - NH-24 Expressway and FNG. London Mart is in close proximity to the proposed Metro Station for Greater Noida West which is one of the most happening and planned residential areas. It will cater to about 10 lakh residents in the catchment area as Greater Noida West is a residential hub.



Total Plot Area:
11,777.22 sq. mt.



Surrounded by huge
Residential/IT/ITES &
Industrial Hubs



Beautiful Landscape
and Water Bodies



Multilevel Security
System



Ample
Parking

**ENTERPRISING
EXOTIC
ENTICING
LONDON
NOW NEAR YOU**



**Every
'street'
will lead
you to a
memorable
destination!**

Fourth Floor
THE HUNGER'S STREET

Third Floor
THE BAKER'S STREET

Second Floor
THE FASHION STREET

First Floor
THE REGENT STREET

Ground Floor
THE OXFORD CIRCUS

Lower Ground Floor
THE OXFORD STREET



Get ready to explore the very best of London's ambiance! Taste the most delectable world cuisine at signature restaurants, enjoy a truly memorable shopping experience. All of this backed by the best of Amenities, Retail Trade, Food Courts and Entertainments London Mart is a world-class commercial space in Greater Noida (W) with rewarding proposal for prospective

investors & entrepreneurs. The promise of returns comes true with the benefits of modern infrastructure, excellent connectivity, recreational avenues & enterprising prospects.

It will be an epitome of great architectural marvel, filling the urban space with style, grace, aesthetics and flair. London Mart, a dream for shoppers, a heaven for investors!



SHOPPING



ENTERTAINMENT



FOOD COURT



REST-O-BAR

Lower Ground Floor
THE OXFORD STREET

**Such a significant floor.
Returns for sure.**



London Mart is designed to maximize your investments exponentially. Its innovative design and strategic location advantage makes it a revolutionary commercial wonder that is all set to bring in profits.

Hyper-Market, Anchors, Shops and Kiosks at this entire floor are designed to be easily accessed and visible by the visitors and shoppers, that helps increase footfall.



First Floor
THE REGENT STREET

**Invest here, keep calm
& stay classy**



The Regent Street is a paradise for retailers. It meets the highest international parameters. Well-addressed to provide retailers a perfect setting for hassle free operations.



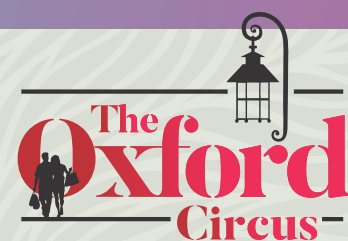
Ground Floor
THE OXFORD CIRCUS

**Comprehensive shopping,
enterprise & a lot of fun.**



This entire floor offers spacious and thoughtfully designed showrooms. The grand atrium of this floor welcomes the shoppers to feast on a world of national and international brands.

The Oxford Circus is dedicated to upscale and exclusive brands. Here business and fun blend perfectly.



Second Floor
THE FASHION STREET

**‘WHO IS WHO’
world fashion awaits you**



Your apparel shopping experience at London Mart will be in the company of world-class ambiance, flair, plush decor, and cozy comfort.

At London Mart, you not only get designer international fashion apparel, but you can also choose from the biggest Indian Ethnic wear brands for men, women and kids. So experience the tempting blend of international and national fashion brands at London Mart and enhance your fashion quotient.



Third Floor

THE BAKER'S STREET



Fourth Floor

THE HUNGER'S STREET



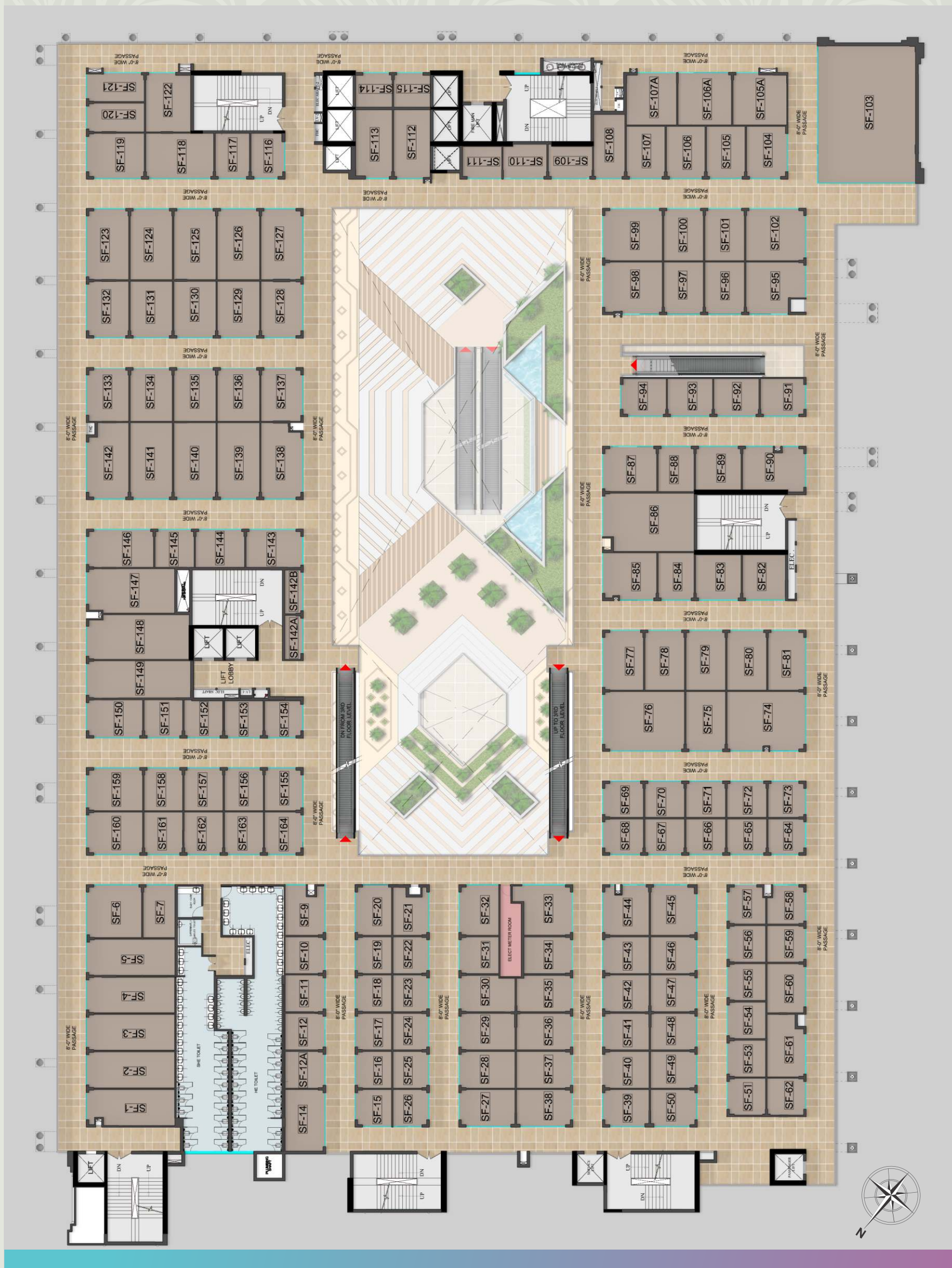
Lower Ground Floor Plan



DISCLAIMER: ALL IMAGES, PERSPECTIVE, SPECIFICATIONS, FEATURES & FIGURES ARE ONLY INDICATIVE & NOT A LEGAL OFFERING. *CONDITIONS APPLY.

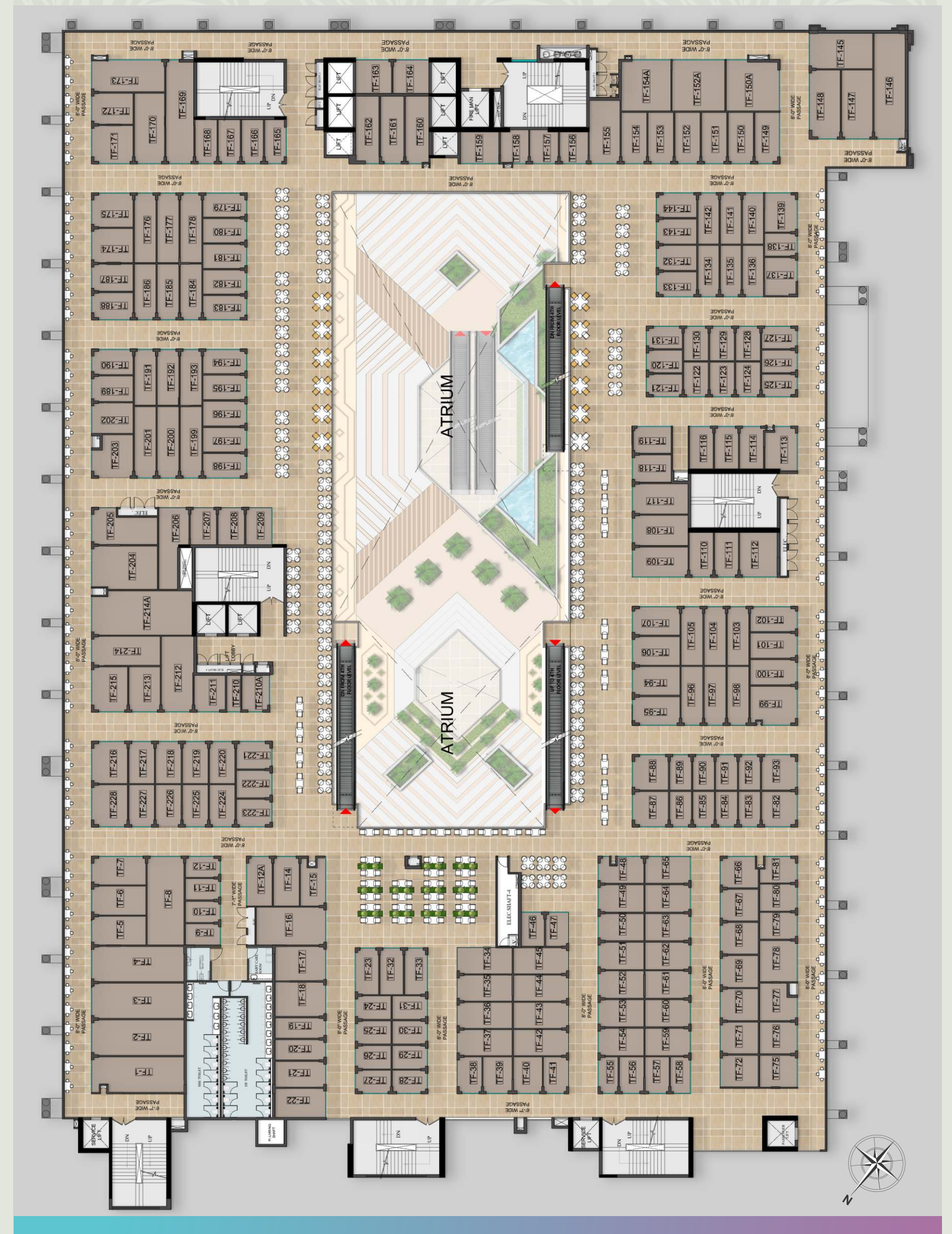


Second Floor Plan



DISCLAIMER: ALL IMAGES, PERSPECTIVE, SPECIFICATIONS, FEATURES & FIGURES ARE ONLY INDICATIVE & NOT A LEGAL OFFERING. *CONDITIONS APPLY.

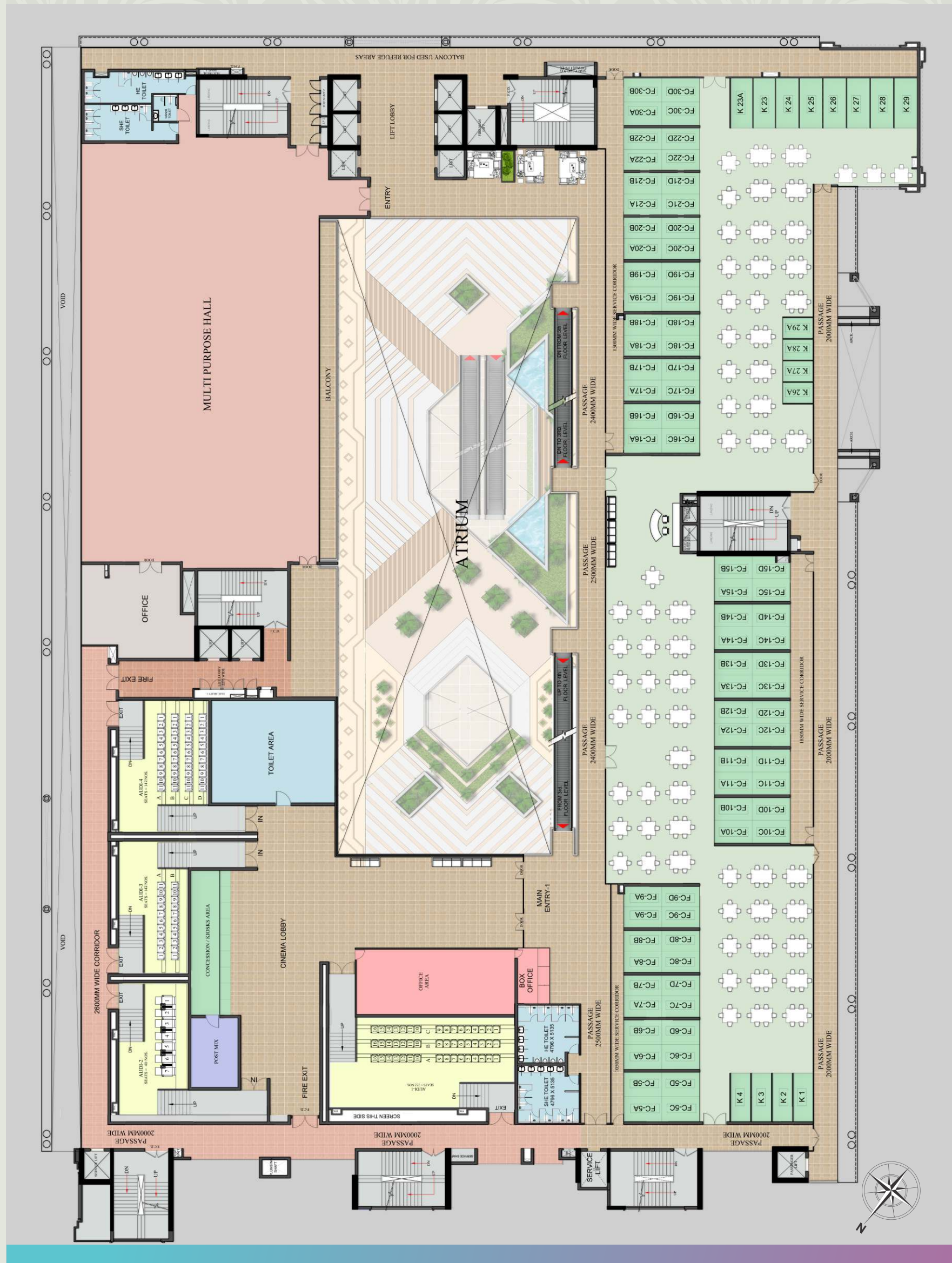
Third Floor Plan



DISCLAIMER: ALL IMAGES, PERSPECTIVE, SPECIFICATIONS, FEATURES & FIGURES ARE ONLY INDICATIVE & NOT A LEGAL OFFERING. *CONDITIONS APPLY.



Fourth Floor Plan

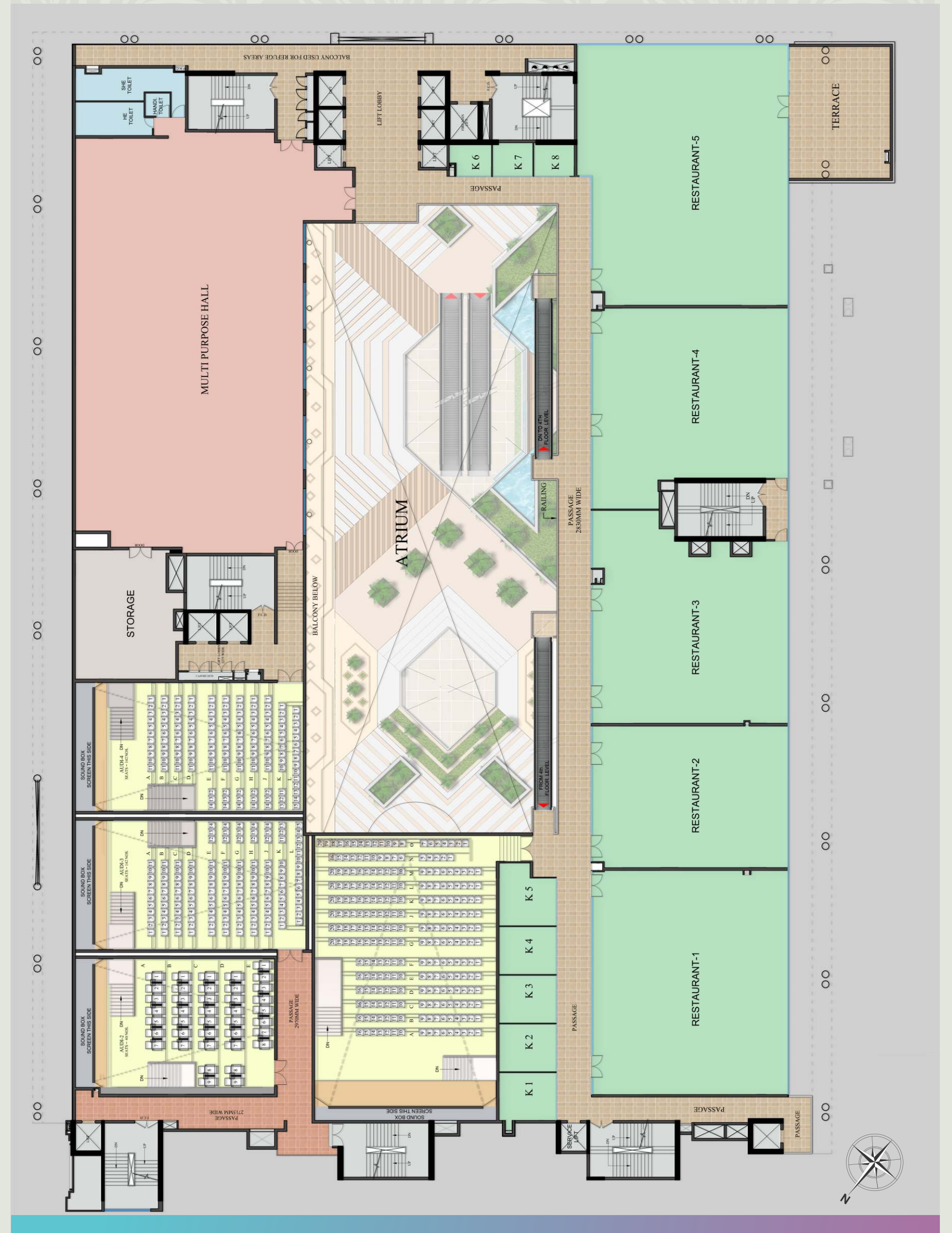


DISCLAIMER: ALL IMAGES, PERSPECTIVE, SPECIFICATIONS, FEATURES & FIGURES ARE ONLY INDICATIVE & NOT A LEGAL OFFERING. *CONDITIONS APPLY.



RESTO-BARS

Fifth Floor Plan



DISCLAIMER: ALL IMAGES, PERSPECTIVE, SPECIFICATIONS, FEATURES & FIGURES ARE ONLY INDICATIVE & NOT A LEGAL OFFERING. *CONDITIONS APPLY.

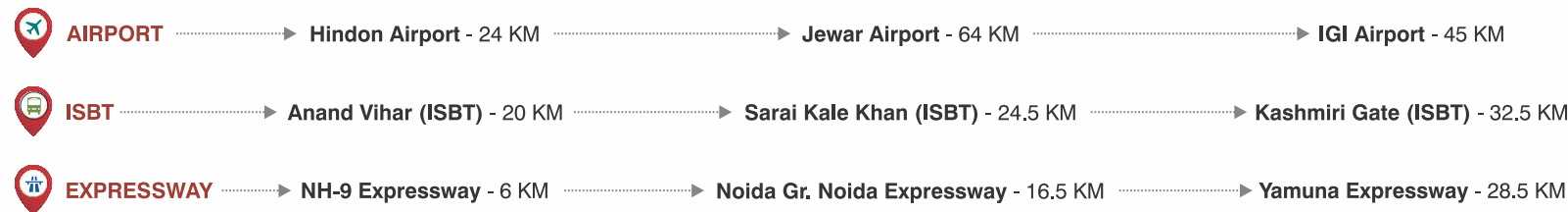




LOCATION MAP



CONNECTIVITY



COLLECTION BANK ACCOUNT DETAIL

COMPANY NAME	BANK NAME	A/C NUMBER	BRANCH	IFSC CODE
MART PROMOTERS PVT LTD	ICICI BANK LTD	071805001814	GHAZIABAD	ICIC0000718



Corporate Office
504, Arunachal Building
Barakhamba Road,
New Delhi 110001

Site Office
Plot No. C - 3, Sector - 16B,
Greater Noida West, (U.P.) – 201 306
Email: sales@londonmartindia.co.in



Allotment No.: GNIDA/Prop/Commercial/CBP-VII/Allot/2016/3829 | Map Sanction PLG (BP) 4051/com/885 Dated 05/02/2018
CIN Number: U70200DL2017PTC314038 | GSTIN: 09AAKCM8897Q1Z0

DISCLAIMER: ALL IMAGES, PERSPECTIVE, SPECIFICATIONS, FEATURES & FIGURES ARE ONLY INDICATIVE & NOT A LEGAL OFFERING. *CONDITIONS APPLY.



LIVE.
EXPLORE.
EVOLVE.



LONDON MART
STUDIOS





Redefine Your Lifestyle: Experience our Studios with a View

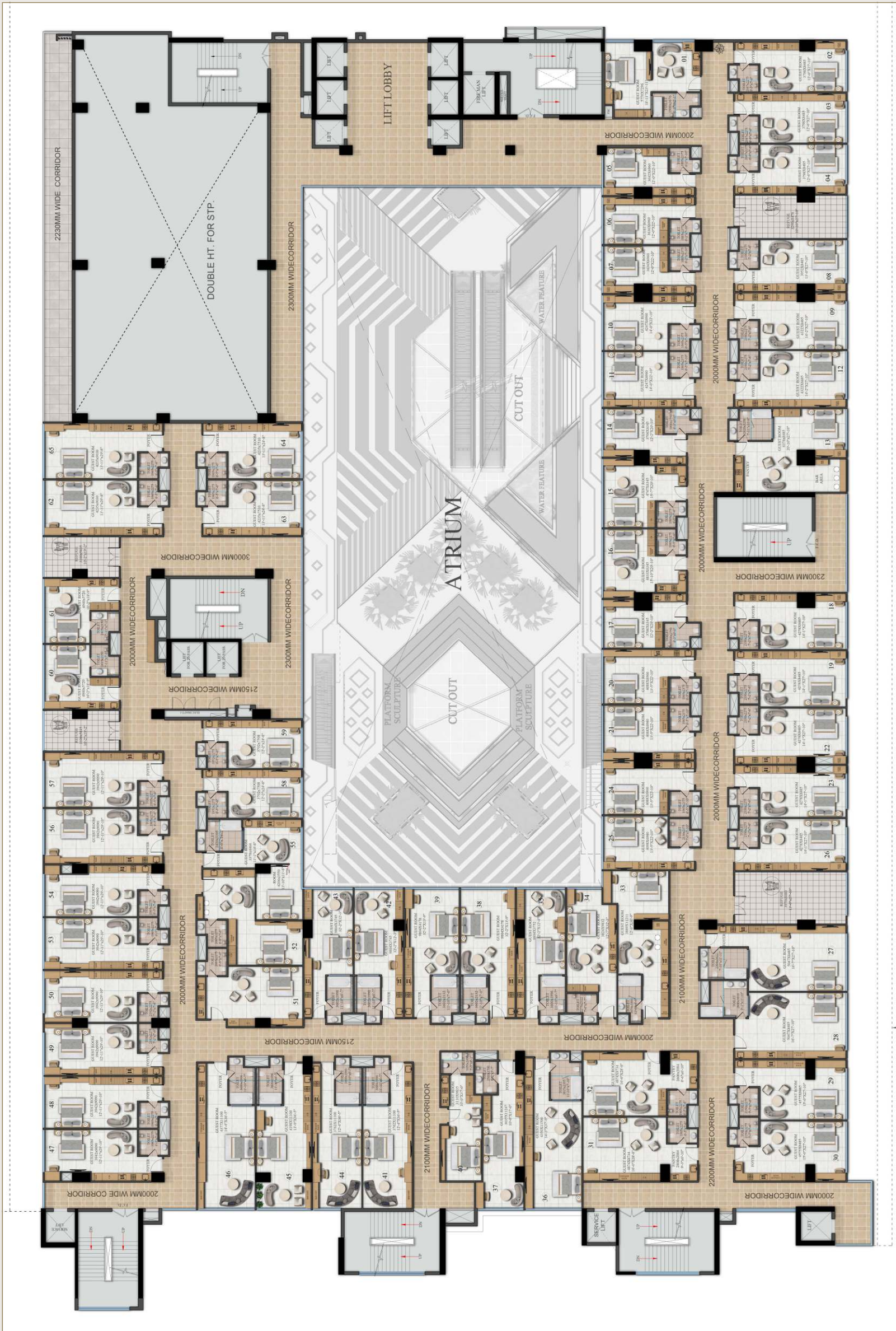
London Mart's **Premium Studios** offer a cutting-edge living experience designed for contemporary lifestyles. These 1 BHK Premium Studios, approximately 55 sq. meters in size, are thoughtfully crafted for modern living. It features a dedicated, Spacious Double height entrance lobby, a reception lobby with high-end finishes, and a dedicated reception desk with a comfortable seating area for visitors. Perfect for both investors and end-users, these studios offer low maintenance costs and a range of amenities, including 24/7 water supply, 100% power backup, fire safety systems, CCTV surveillance, and perimeter security. High-speed elevators add convenience and ease to your daily life.



L O N D O N M A R T

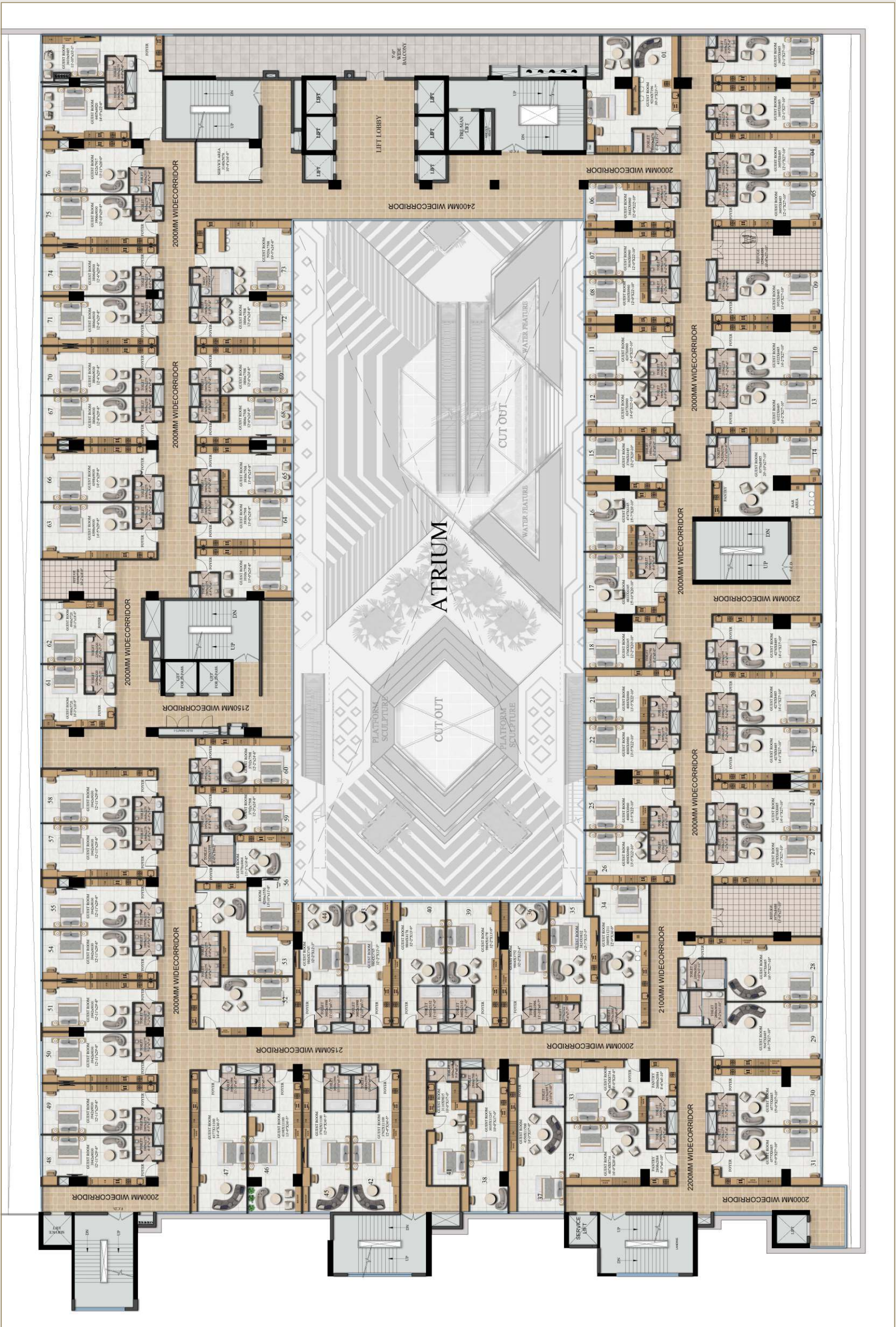
STUDIOS

7TH FLOOR



DISCLAIMER: ALL IMAGES, PERSPECTIVE, SPECIFICATIONS, FEATURES & FIGURES ARE ONLY INDICATIVE & NOT A LEGAL OFFERING. *CONDITIONS APPLY.

8TH FLOOR



DISCLAIMER: ALL IMAGES, PERSPECTIVE, SPECIFICATIONS, FEATURES & FIGURES ARE ONLY INDICATIVE & NOT A LEGAL OFFERING. *CONDITIONS APPLY.

10TH FLOOR



DISCLAIMER: ALL IMAGES, PERSPECTIVE, SPECIFICATIONS, FEATURES & FIGURES ARE ONLY INDICATIVE & NOT A LEGAL OFFERING. *CONDITIONS APPLY.

11TH FLOOR



12TH FLOOR PLAN

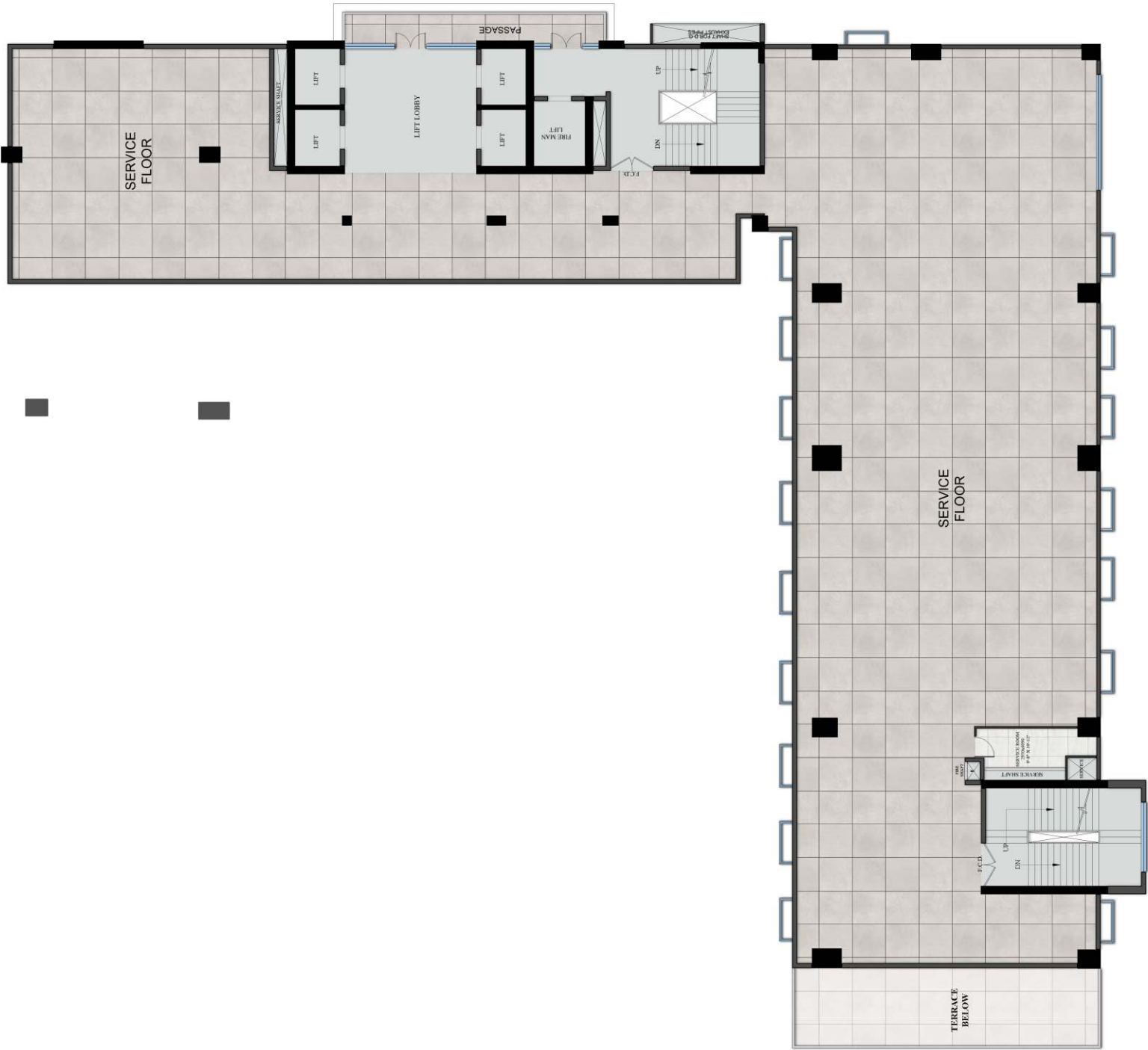
DISCLAIMER: ALL IMAGES, PERSPECTIVE, SPECIFICATIONS, FEATURES & FIGURES ARE ONLY INDICATIVE & NOT A LEGAL OFFERING. *CONDITIONS APPLY.

12TH FLOOR



12TH FLOOR PLAN

13TH FLOOR



DISCLAIMER: ALL IMAGES, PERSPECTIVE, SPECIFICATIONS, FEATURES & FIGURES ARE ONLY INDICATIVE & NOT A LEGAL OFFERING. *CONDITIONS APPLY.

14TH FLOOR



DISCLAIMER: ALL IMAGES, PERSPECTIVE, SPECIFICATIONS, FEATURES & FIGURES ARE ONLY INDICATIVE & NOT A LEGAL OFFERING. *CONDITIONS APPLY.

15TH FLOOR



15TH FLOOR PLAN

DISCLAIMER: ALL IMAGES, PERSPECTIVE, SPECIFICATIONS, FEATURES & FIGURES ARE ONLY INDICATIVE & NOT A LEGAL OFFERING. *CONDITIONS APPLY.

16TH FLOOR



DISCLAIMER: ALL IMAGES, PERSPECTIVE, SPECIFICATIONS, FEATURES & FIGURES ARE ONLY INDICATIVE & NOT A LEGAL OFFERING. *CONDITIONS APPLY.

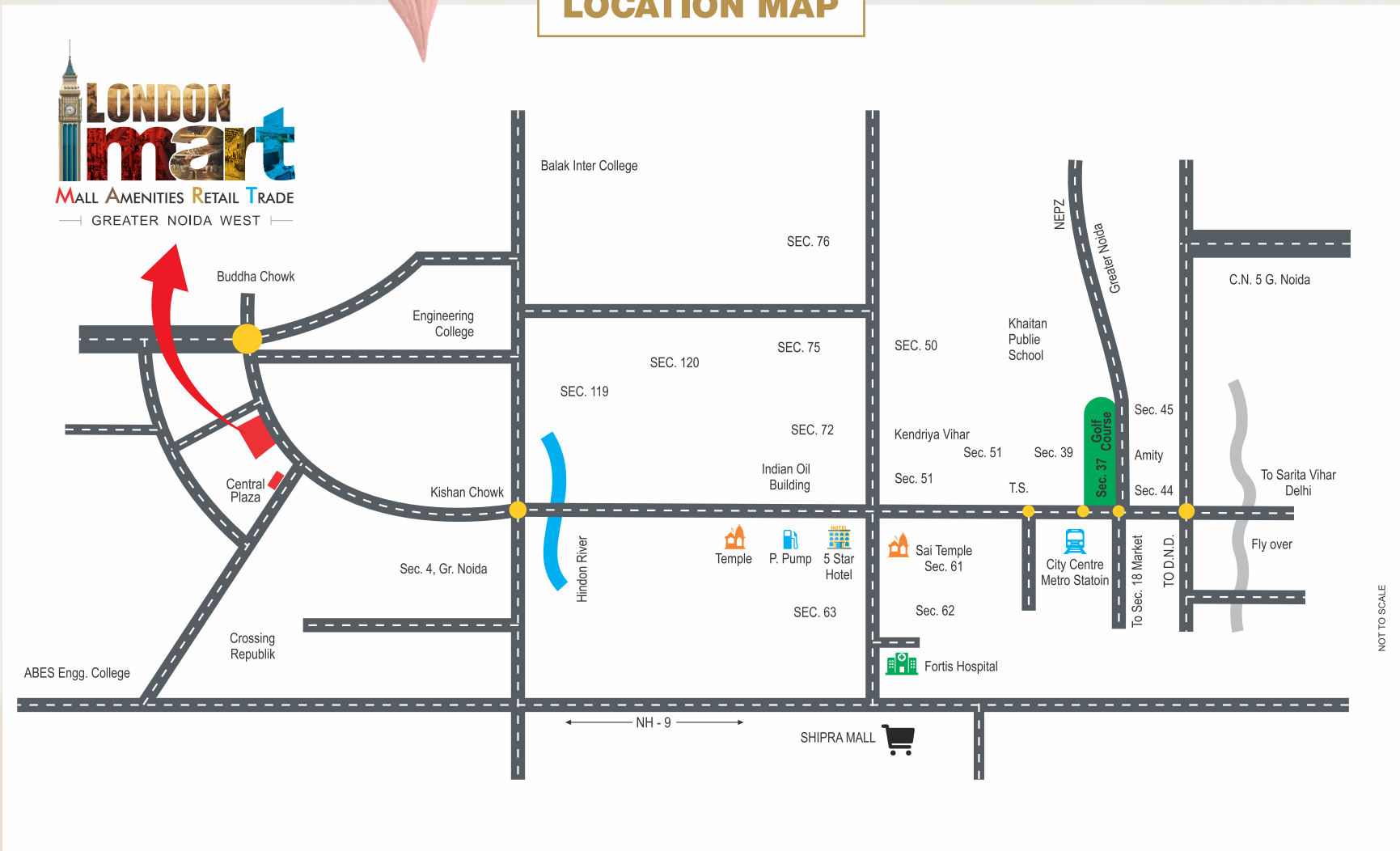
17TH FLOOR



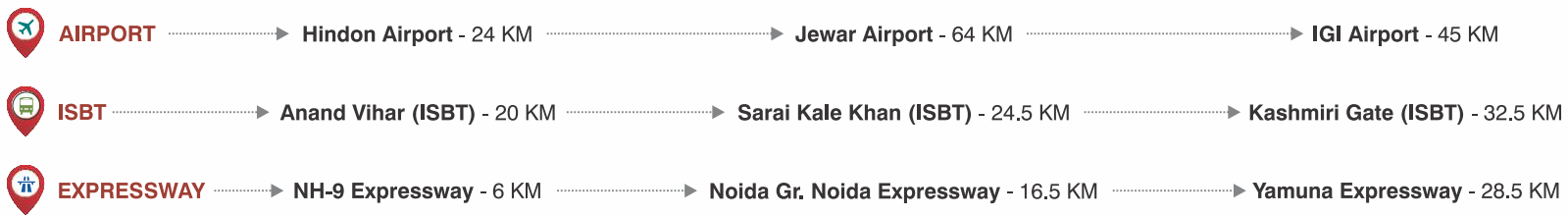
DISCLAIMER: ALL IMAGES, PERSPECTIVE, SPECIFICATIONS, FEATURES & FIGURES ARE ONLY INDICATIVE & NOT A LEGAL OFFERING. *CONDITIONS APPLY.



LOCATION MAP



CONNECTIVITY



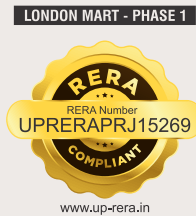
COLLECTION BANK ACCOUNT DETAIL

COMPANY NAME	BANK NAME	A/C NUMBER	BRANCH	IFSC CODE
MART PROMOTERS PVT LTD	ICICI BANK LTD	071805001814	GHAZIABAD	ICIC0000718



Corporate Office
504, Arunachal Building
Barakhamba Road,
New Delhi 110001

Site Office
Plot No. C - 3, Sector - 16B,
Greater Noida West, (U.P.) – 201 306
Email: sales@londonmartindia.co.in



Allotment No.: GNIDA/Prop/Commercial/CBP-VII/Allot/2016/3829 | **Map Sanction** PLG (BP) 4051/com/885 Dated 05/02/2018
CIN Number: U70200DL2017PTC314038 | **GSTIN:** 09AAKCM8897Q1Z0

DISCLAIMER: ALL IMAGES, PERSPECTIVE, SPECIFICATIONS, FEATURES & FIGURES ARE ONLY INDICATIVE & NOT A LEGAL OFFERING. *CONDITIONS APPLY.



EXPLORE THE SPECIFICATIONS

SPECIFICATIONS	FULLY FURNISHED	STANDARD FINISHED	BARE SHELL
FLOORING	<ul style="list-style-type: none">Vitrified Tiles / Wooden Flooring in RoomCeramic Tiles in Bathroom	<ul style="list-style-type: none">Vitrified Tiles / Wooden Flooring in RoomCeramic Tiles in Bathroom	<ul style="list-style-type: none">RCC SlabRCC
WALL & CEILING FINISHES	<ul style="list-style-type: none">Plastic Paint / Wall PaperPOP Finish Ceiling	<ul style="list-style-type: none">OBDPOP Finish Ceiling	<ul style="list-style-type: none">No Paint Work Only Plaster
DOORS & WINDOWS	<ul style="list-style-type: none">Hard Wood Door Frame (Marandi / PVC or Equivalent)Laminated / Skin / Flush DoorsUPVC / Aluminium Outer WindowGood Quality Hardware FittingsMS Railing in Balcony	<ul style="list-style-type: none">Hard Wood Door Frame (Marandi / PVC or Equivalent)Laminated / Skin / Flush DoorsUPVC / Aluminium Outer WindowGood Quality Hardware FittingsMS Railing in Balcony	<ul style="list-style-type: none">Only Main Outer Door/ Window with Frame will be Provided----
SUITE SPECIFICATIONS	<ul style="list-style-type: none">Air ConditionerDouble Bed • MattressesBed Sheet and Pillow Set (with cover)LED TV • TV ConsoleLounge Chairs & Table (Depends on size of studio)Study Table & chairLight Fitting • Designer FanWardrobes • CurtainsPressing Iron without standFloor MatIntercom Facility with Telephone Equipment	<ul style="list-style-type: none">---------Provision of Intercom	<ul style="list-style-type: none">---------Provision of Intercom
PANTRY AREA SPECIFICATIONS	<ul style="list-style-type: none">Pantry Top with Wood WorkSinkMicrowaveRefrigeratorHot PlateROTea/coffee MakerCrockery SetCutleryChimneyToasterDustbin	<ul style="list-style-type: none">Pantry TopSinkRO---------	<ul style="list-style-type: none">------------
VANITY AREA SPECIFICATIONS	<ul style="list-style-type: none">Designer Vanity MirrorDesigner Vanity CabinetWash BasinGeyserDesigner Vanity Mirror LightsShower HeadExhaust FanWCOne Towel RackOne Big Towel and 2 Small Towel	<ul style="list-style-type: none">Designer Vanity MirrorShower HeadExhaust FanWCWash Basin-----	<ul style="list-style-type: none">----------



Corporate Office
504, Arunachal Building
Barakhamba Road,
New Delhi 110001

Site Office
Plot No. C - 3, Sector - 16B,
Greater Noida West, (U.P.) – 201 306
Email: sales@londonmartindia.co.in



Allotment No.: GNIDA/Prop/Commercial/CBP-VII/Allot/2016/3829 | Map Sanction PLG (BP) 4051/com/885 Dated 05/02/2018

CIN Number: U70200DL2017PTC314038 | GSTIN: 09AAKCM8897Q1Z0

DISCLAIMER: ALL IMAGES, PERSPECTIVE, SPECIFICATIONS, FEATURES & FIGURES ARE ONLY INDICATIVE & NOT A LEGAL OFFERING. *CONDITIONS APPLY.